

From: Hutton, Laura-Beth [<mailto:Laura-bethHutton@eversheds-sutherland.com>]
Sent: 29 January 2019 12:15
To: Kate Mignano; Northampton Gateway
Cc: Thomson, Morag; Ewa Sherman
Subject: Northampton Gateway

Dear Kate

Further to our conversation this morning, please find attached, as requested, Document 2.15 as a standalone document.

Kind regards
Laura-Beth

Laura-Beth Hutton | Senior Associate | Planning and Infrastructure Consenting | Eversheds Sutherland

T: +44 115 931 7642
M: [REDACTED]

www.eversheds-sutherland.com

Eversheds Sutherland

Client Commitment. Innovative Solutions. Global Service.

This email is sent for and on behalf of Eversheds Sutherland (International) LLP

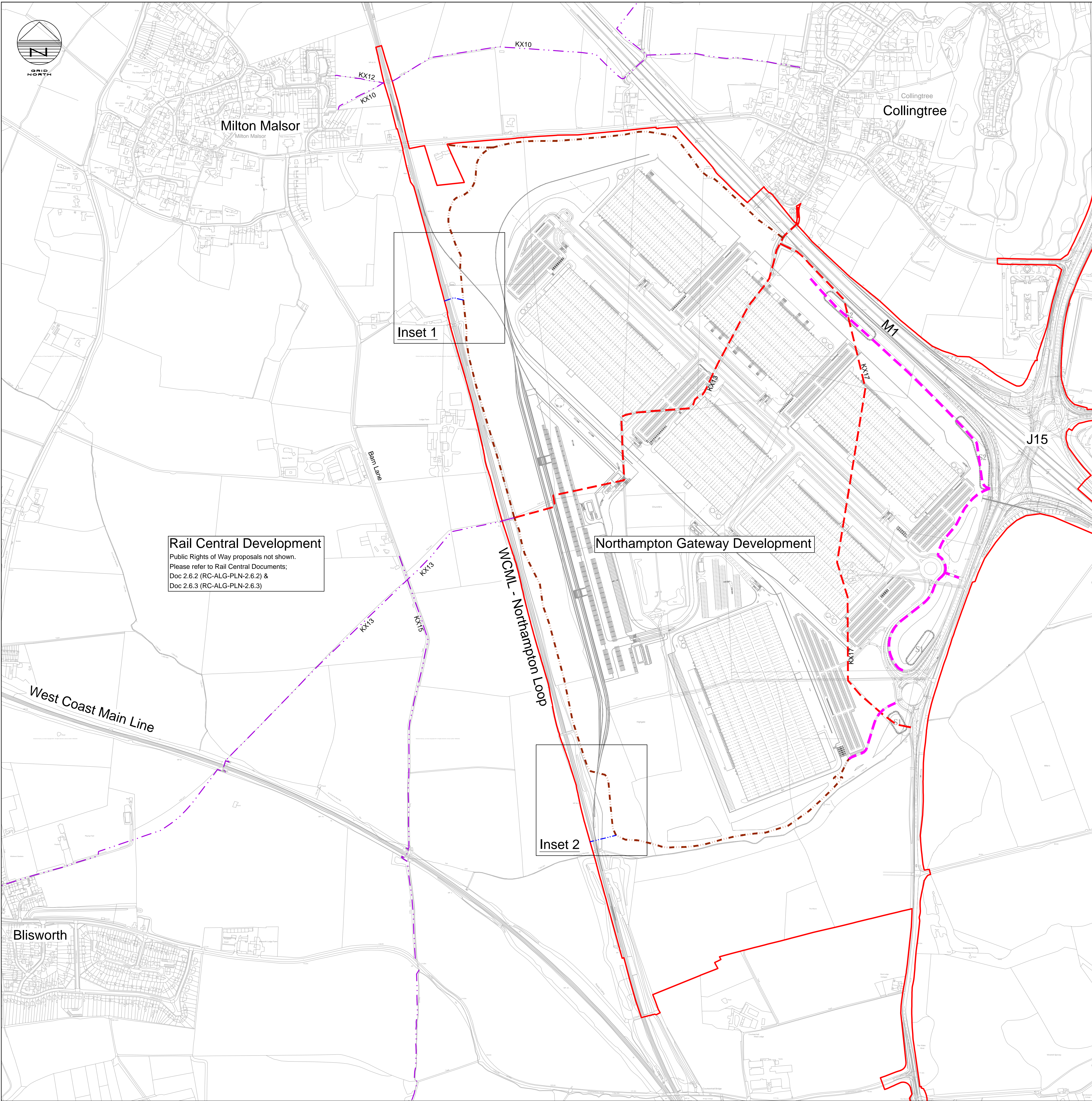
Eversheds Sutherland (International) LLP is a limited liability partnership, registered in England and Wales, (number OC304065), registered office One Wood Street, London, EC2V 7WS. Registered VAT number GB820704559. A list of names of the members (who are referred to as "partners") together with a list of those non-members who are designated as partners and their professional qualifications is available for inspection at the above office. Eversheds Sutherland (International) LLP is authorised and regulated by the Solicitors Regulation Authority and governed by the SRA Code of Conduct (see www.sra.org.uk/handbook/). Eversheds Sutherland (International) LLP is part of a global legal practice, operating through various separate and distinct legal entities, under Eversheds Sutherland. Each Eversheds Sutherland entity is a separate legal entity and is not responsible for the acts or omissions of, nor can bind or obligate, another Eversheds Sutherland entity. For a full description of the structure and a list of offices, please visit www.eversheds-sutherland.com

Confidentiality: This e-mail and its attachments are intended solely for the person to whom they are addressed, are strictly confidential and may contain privileged information. If they have come to you in error you must not copy or show them to anyone; please reply to this e-mail and highlight the error to the sender and then immediately delete the message. Unless expressly agreed in writing, Eversheds Sutherland (International) LLP accepts no liability to persons other than clients of the firm in respect of the contents of emails or attachments.

www.eversheds-sutherland.com

We process your personal data in accordance with our Privacy Notice, www.eversheds-sutherland.com/privacy. If you have any queries or would like to exercise any of your rights in relation to your personal data, please contact dataprotectionoffice@eversheds-sutherland.com.

This email has been scanned by the Symantec Email Security.cloud service.
For more information please visit <http://www.symanteccloud.com>

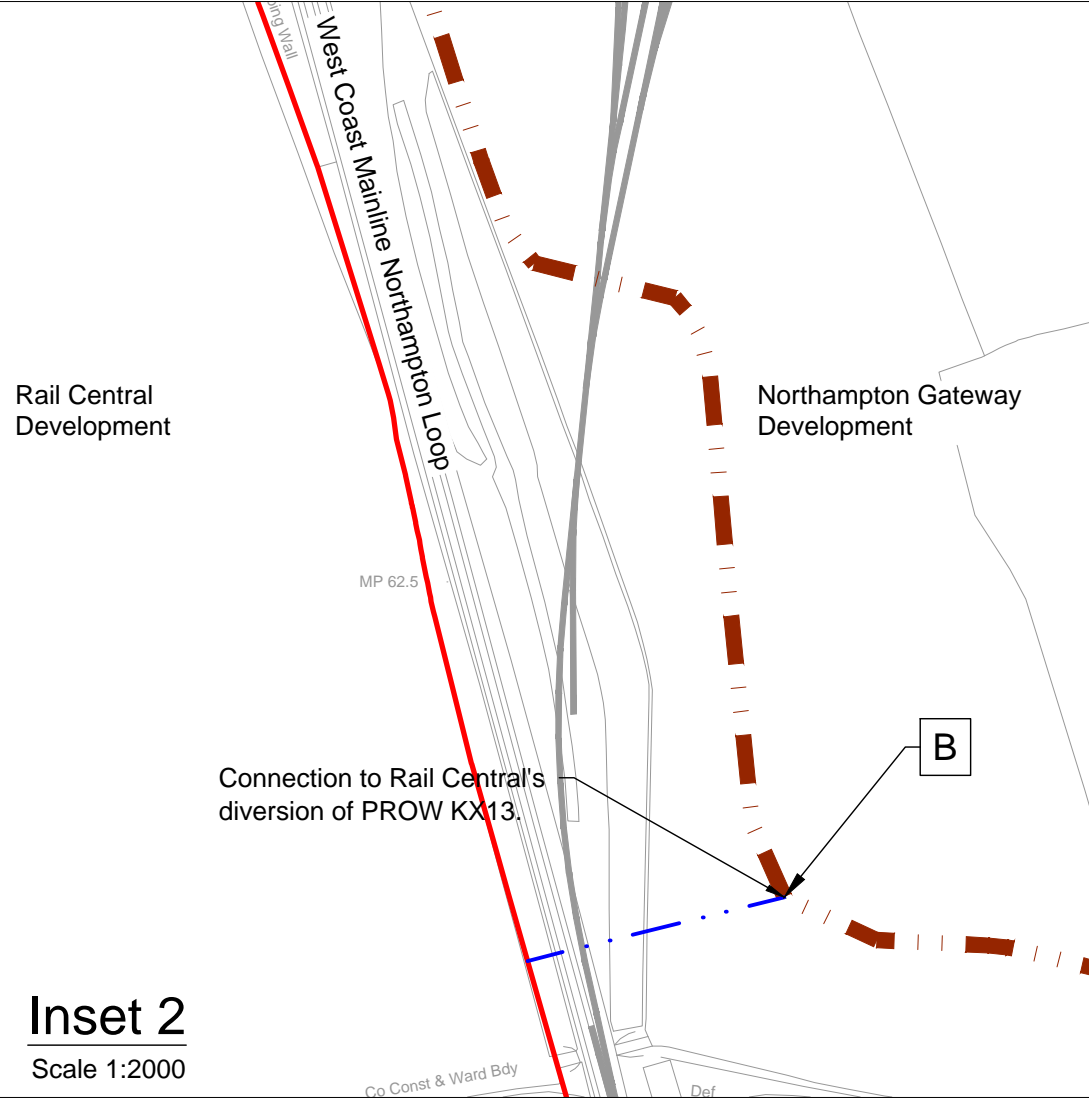
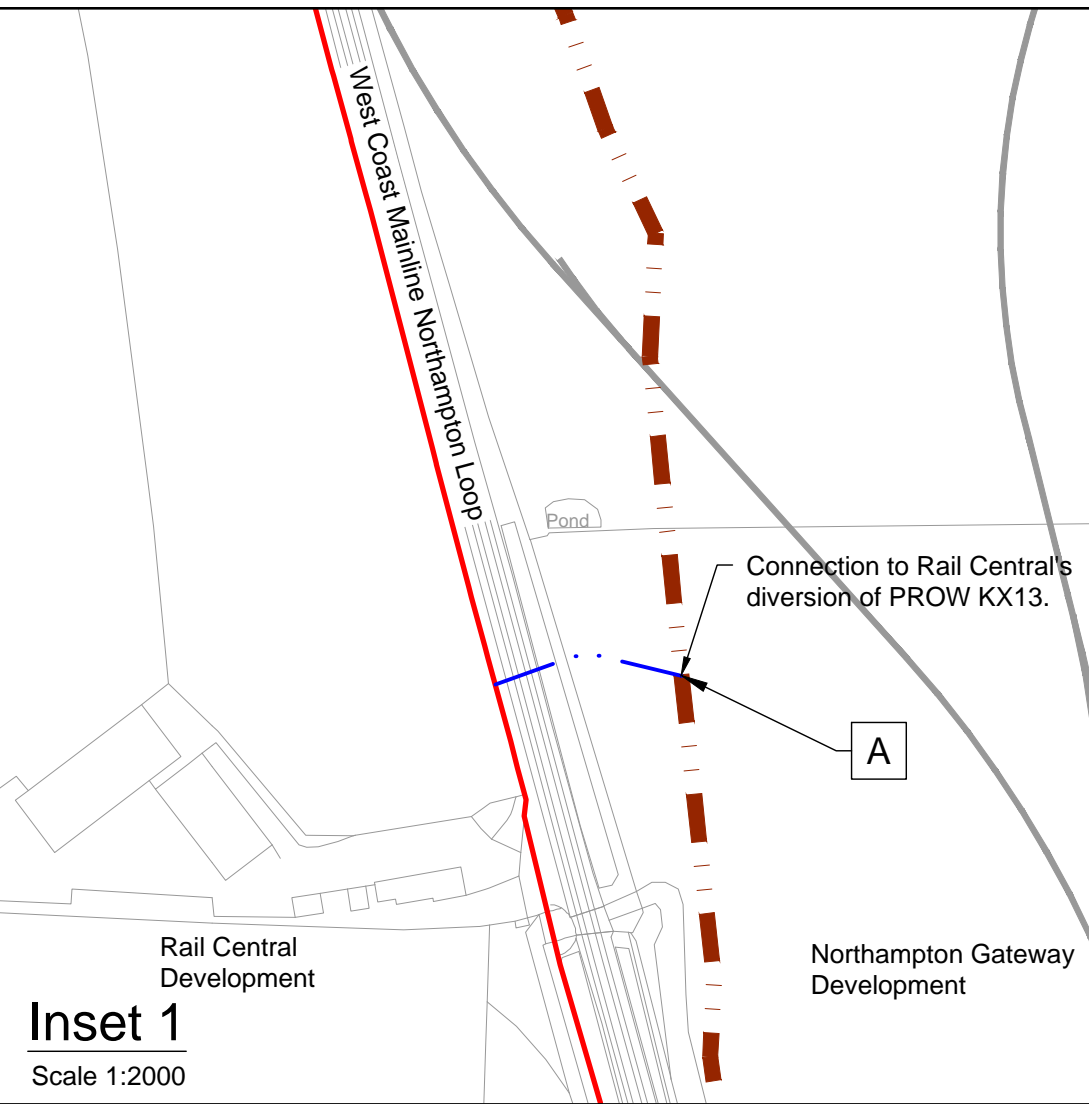


Rail Central Development
Public Rights of Way proposals not shown.
Please refer to Rail Central Documents;
Doc 2.6.2 (RC-ALG-PLN-2.6.2) &
Doc 2.6.3 (RC-ALG-PLN-2.6.3)

Northampton Gateway Development

Inset 1

Inset 2



Notes

- Do not scale this drawing. All dimensions must be checked/ verified on site. If in doubt ask.
- This drawing is to be read in conjunction with all relevant architects, engineers and specialists drawings and specifications.
- All dimensions in millimetres unless noted otherwise. All levels in metres unless noted otherwise.
- Any discrepancies noted on site are to be reported to the engineer immediately.

Legend

NORTHAMPTON GATEWAY PUBLIC RIGHTS OF WAY PROPOSALS

- ORDER LIMITS
- EXISTING PUBLIC RIGHT OF WAY RETAINED
- EXISTING PUBLIC RIGHT OF WAY STOPPED UP
- NEW PUBLIC FOOTPATH CREATED
- NEW CYCLE TRACK CREATED (ALL PURPOSE HIGHWAY FOR USE BY PEDESTRIANS AND CYCLISTS ONLY)

INTERACTIONS WITH RAIL CENTRAL'S PUBLIC RIGHTS OF WAY PROPOSALS

- RAIL CENTRAL PUBLIC RIGHT OF WAY CONNECTION REFERENCE
- FOOTPATH TO BE PART OF RAIL CENTRAL DEVELOPMENT

P3	07.01.19	Minor Amendments	PG	SRH	
P2	04.01.19	Updated following comments	PG	SRH	
P1	04.01.19	Preliminary Issue	PG	SRH	
Rev	Date	Details of issue / revision	Drw	Rev	

ISSUES & REVISIONS

ROXHILL

NORTHAMPTON GATEWAY
STRATEGIC RAIL FREIGHT INTERCHANGE

THE NORTHAMPTON GATEWAY RAIL FREIGHT INTERCHANGE ORDER 201X

Drawing Title

PUBLIC RIGHT OF WAY CONNECTIONS BETWEEN NORTHAMPTON GATEWAY AND RAIL CENTRAL

Scale	1:5000	Drawn	P. Goodyear
Size	A1	Reviewed	S. Hilditch
Regulation	5(2) (o)	Document	2.15

Drawing Status

SUBMISSION

Drawing No.

NGW-BWB-GEN-XX-SK-C-SK91

Revision

P3